



KM-1301S_H-P

STACKABLE ICE CUBER
TAMPER PROOF MODEL



KM-1301S_H-P
03/30/17
Item # 13322



Item #: _____
Project: _____
Qty: _____
AIA#: _____

Features

► Individual crescent cube

► Stainless steel evaporator

► CycleSaver™ design 

- Up to 1329 lbs. of ice production per 24 hours
- Stackable for 2658 lbs. per 24 hours ice production in the same floor space
- Durable stainless steel exterior
- Protected by H-Guard Plus  Antimicrobial Agent
- EverCheck™ alert system 
- Removable air filters (Air-cooled model only)
- R-404A Refrigerant

Available on Bins:

B-800 **B-1150SS** **B-1500SS** *Top kit may be required.*
B-900 **B-1300SS** **B-1650SS** *See Bin Spec Sheets.*

Warranty:

3 Year Parts & Labor on entire machine. 5 Year Parts & Labor on Evaporator. 5 Year Parts on Compressor; air-cooled condenser coil. Valid in United States, Canada, Puerto Rico and U.S. Territories. Contact factory for warranty in other countries.

W x D x H
48" x 27^{3/8}" x 27^{3/8}"

KM-1301SAH-P

Air-Cooled

Shown on optional bin B-900

KM-1301SWH-P

Water-Cooled

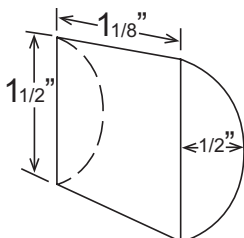


Exterior Fasteners are
Tamper Proof Torx Pin Screws



Condenser	Model	ICE PRODUCTION		WATER USAGE		ELECTRICAL				Heat Rejection BTU/hr.	Shipping Weight	ENERGY STAR®
		Air / Water Temp Lbs. per 24 hours	Per Cycle	Potable Gal. per 100 lbs.	Condenser Gal. per 100 lbs.	kWh Used per 100 lbs.	Max. Fuse Size or HACR Circuit Breaker	Amperage	Voltage			
Air-Cooled	KM-1301SAH	70°/50°F 1329 90°/70°F 1164	29.8 Lbs. 1440 Cubes	15.7 90°/70°F	N/A 90°/70°F	4.63 90°/70°F	20A	12.4A	208-230V/60/1	20,300	315 lbs.	
Water-Cooled	KM-1301SWH	1290 1276	31.5 1440	19.6	124	3.44	20A	8.2A	208-230V/60/1	17,200	315 lbs.	

KM Cube Dimensions*



* approximate size in inches, image not to scale

Operating Limits

- Ambient Temp Range 45 - 100°F
- Water Temp Range 45 - 90°F
- Water Pressure 10 - 113 PSIG
- Voltage Range 187 - 253V

Service

- Panels easily removed and all components accessible for service.
- Allow 6" (15cm) clearance at rear, sides, and top for proper air circulation and ease of maintenance/service.

Plumbing

- Icemaker Water Supply Line: Minimum 3/8" Nominal ID Copper Water Tubing or Equivalent
- Icemaker Drain Line: Minimum 3/4" Nominal ID Hard Pipe or Equivalent
- Water-Cooled Model (Lines Must Be Independent of Icemaker)
- Condenser Water Supply Line: Minimum 3/8" Nominal ID Copper Water Tubing or Equivalent
- Condenser Drain/Return Line: Minimum 3/8" Nominal ID Hard Pipe (open drain system) or Copper Water Tubing (closed loop system) or Equivalent



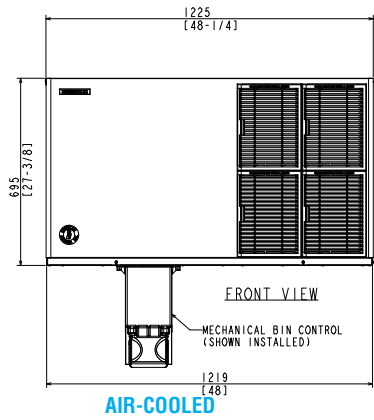
KM-1301S_H-P

STACKABLE ICE CUBER TAMPER PROOF MODEL

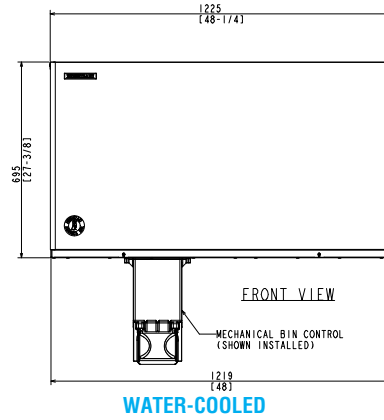


KM-1301S_H-P
03/30/17 Item #
13322

FRONT VIEW

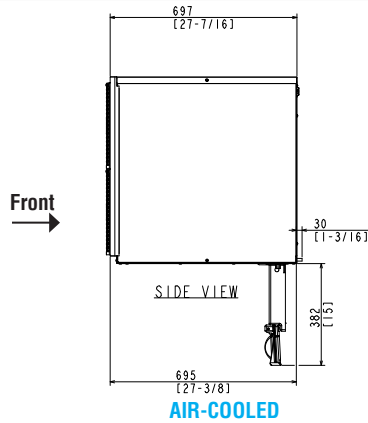


AIR-COOLED

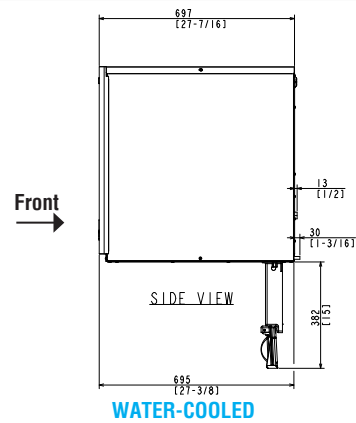


WATER-COOLED

SIDE VIEW

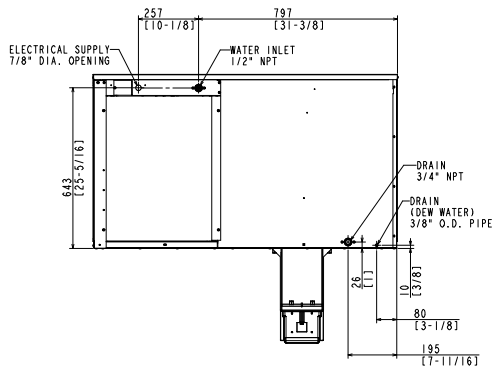


AIR-COOLED

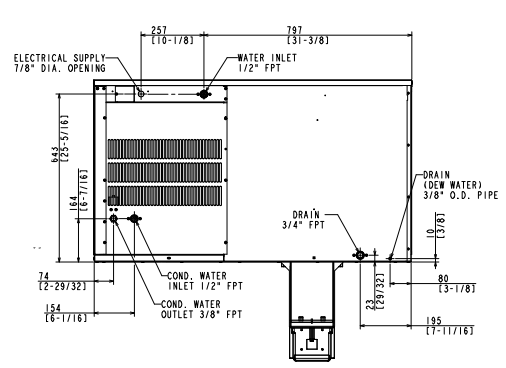


WATER-COOLED

BACK VIEW

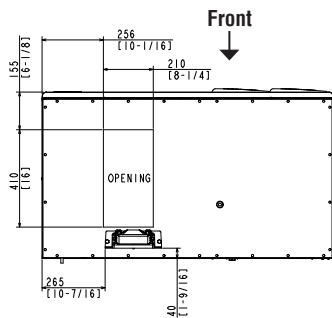


AIR-COOLED

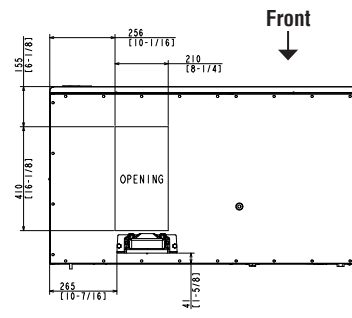


WATER-COOLED

BOTTOM VIEW



AIR-COOLED



WATER-COOLED