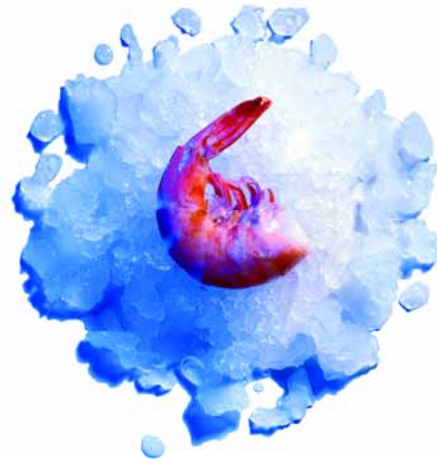
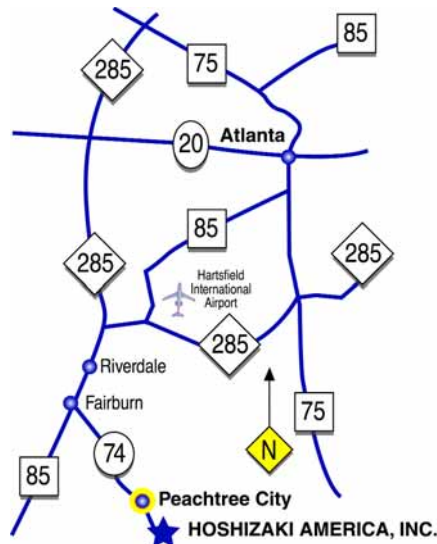


HOSHIZAKI AMERICA, INC.

FLAKER SERIES



RELIABILITY IS A BEAUTIFUL THING™



Hoshizaki America, with its corporate headquarters in Peachtree City, Georgia and a second manufacturing facility in Griffin, Georgia, has among the most automated production facilities in the industry. Using the latest state-of-the-art technology, every Hoshizaki ice machine is run-tested at the factory, and undergoes numerous quality performance tests including ice production capacity and energy efficiency. Hoshizaki America offers advanced seminars at our headquarters and basic training programs which are scheduled across the country for service representatives and customers.

Did you know...?

- **Hoshizaki** is one of the world's largest manufacturers of commercial ice equipment, employing 7,000 people.
- **Hoshizaki** is the world's second largest manufacturer of commercial refrigerated food service equipment with sales of nearly \$1 billion servicing customers in 60 nations.
- **Hoshizaki** operates six plants in Japan, two in the U.S. and one in England, distributing products worldwide.
- **Hoshizaki** operates sales offices in Europe, Japan and the U.S. with distribution throughout Europe, North and South America, Asia Pacific and Australia.
- 41 of the top 50 U.S. Foodservice chains specify and use **Hoshizaki** ice machines.
- 91% of sales dollars generated by **Hoshizaki America, Inc.** come from equipment manufactured in Georgia.



HOSHIZAKI AMERICA, INC. PRESENTS THE INDUSTRIES MOST RELIABLE FLAKED AND CUBELET ICE MAKERS

FLAKERS & CUBELETS

Hoshizaki Flakers and Cubelet Ice Machines are designed in a variety of sizes and styles. The BAF series are self contained flakers with bin included, while the (M) Modular Series come in three types of units, air-cooled, water-cooled, and remote air-cooled.

The MLH low-side unit is also available in the larger F-1001 and F-2000 units. These units require a rack system for installation. The Cubelet machines are designated with -C.



F-300BAF
F-500BAF

F-450MAH
F-450MAH-C
shown on an optional
B-300 bin

F-800MAH
F-800MWH
F-800MAH-C
F-800MWH-C
Air-Cooled model shown
on an optional B-500 bin

F-1001MAH(C)
F-1001MWH(C)
F-1001MRH(C)
F-1001MLH
Air-Cooled model shown on
an optional B-700 bin

F-2000MWH
F-2000MRH
F-2000MRH3
F-2000MLH
Water-Cooled model shown on
an optional B-900 bin

Both Flakers and Cubelets feature an:

1. Internal auger system
2. Solid, anti-magnetic stainless steel auger
3. Sealed gear housing
4. Thermal overload motor protection
5. Water-friendly resin bearings

DIMENSION	
Width x Depth x Height	
F300BAF	36 x 24 x 33
F300BAF*	36 x 24 x 39
F500BAF	38 x 29 x 36
F500BAF*	38 x 29 x 42

*with optional 6" legs

ICEMAKER DIMENSION	
Width x Depth x Height	
F-450MAH(C)	21 ⁷ / ₈ x 27 ³ / ₈ x 22
DIMENSION BYBIN SIZE	
Width x Depth x Height	
B-300	22 x 32 ¹ / ₂ x 68
B-500	30 x 32 ¹ / ₂ x 68
B-700	44 x 32 ¹ / ₂ x 68
B-800	48 x 32 ¹ / ₂ x 68
B-900	52 x 32 ¹ / ₂ x 68

ICEMAKER DIMENSION	
Width x Depth x Height	
F-800M_H(C)	22 x 27 ³ / ₈ x 25 ¹ / ₄
DIMENSION BYBIN SIZE	
Width x Depth x Height	
B-300	22 x 32 ¹ / ₂ x 71 ¹ / ₄
B-500	30 x 32 ¹ / ₂ x 71 ¹ / ₄
B-700	44 x 32 ¹ / ₂ x 71 ¹ / ₄
B-800	48 x 32 ¹ / ₂ x 71 ¹ / ₄
B-900	52 x 32 ¹ / ₂ x 71 ¹ / ₄

ICEMAKER DIMENSION	
Width x Depth x Height	
F-1001M_H(C)	22 x 27 ³ / ₈ x 25 ¹ / ₄
DIMENSION BYBIN SIZE	
Width x Depth x Height	
B-300	22 x 32 ¹ / ₂ x 71 ¹ / ₄
B-500	30 x 32 ¹ / ₂ x 71 ¹ / ₄
B-700	44 x 32 ¹ / ₂ x 71 ¹ / ₄
B-800	48 x 32 ¹ / ₂ x 71 ¹ / ₄
B-900	52 x 32 ¹ / ₂ x 71 ¹ / ₄

ICEMAKER DIMENSION	
Width x Depth x Height	
F-2000M_H(3)	30 x 27 ¹ / ₂ x 33 ¹ / ₄
DIMENSION BYBIN SIZE	
Width x Depth x Height	
B-500	30 x 32 ¹ / ₂ x 79 ¹ / ₄
B-700	44 x 32 ¹ / ₂ x 79 ¹ / ₄
B-800	48 x 32 ¹ / ₂ x 79 ¹ / ₄
B-900	52 x 32 ¹ / ₂ x 79 ¹ / ₄

FEATURES AND BENEFITS

INTERNAL AUGER DESIGN

Hoshizaki Flakers are designed with an Internal Auger system. There are two engineering designs, the internal auger and the external auger. Our internal auger system is more durable and historically produces the highest quality of ice with fewer repairs, less down-time, and has achieved good efficiency results for the amount of ice produced.



EVAPORATOR

FEATURE:

- Stainless steel auger and evaporator barrel

BENEFIT:

- Anti-magnetic auger and barrel reduces mineral build up
- Design produces the highest quality ice with fewer repairs and less down time
- Good efficiency results, low kilowatt consumption

AIR FILTERS

Hoshizaki Flakers with self-contained air-cooled condensers are designed with a removable, cleanable air filter. This protects the machine and its interior components from dust lint, flour and grease. It reduces maintenance costs and extends machine life.



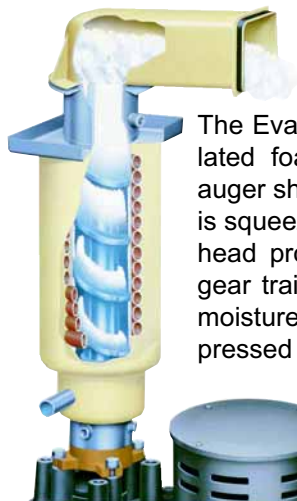
AIR FILTERS

FEATURE:

- Removable, Cleanable Air filters

BENEFIT:

- Protects machine and interior components from dust, lint, flour, and grease
- Reduces maintenance costs
- Extends machine life



EVAPORATOR

The Evaporator has a durable freezing cylinder with insulated foamed-in-place polyurethane. The stainless steel auger shaves and moves ice upward in the cylinder. Water is squeezed from the ice as it passes through the extruding head providing hard, dry flakes. The unitized motor and gear train that drives the internal auger is sealed against moisture for dependability. Cubelet ice is flake ice compressed into cubelets by the extruding head cutter.

EVAPORATOR

CLEANCYCLE 12™

• The CleanCycle 12™ design featured in Hoshizaki Flakers, flushes the reservoir and evaporator every 12 hours. This washes away impurities and minerals, producing cleaner ice. This feature insures cleanliness of the ice maker, leading to less down time for cleaning and maintenance.*

FEATURE:

- 12 hour flushing system

BENEFIT:

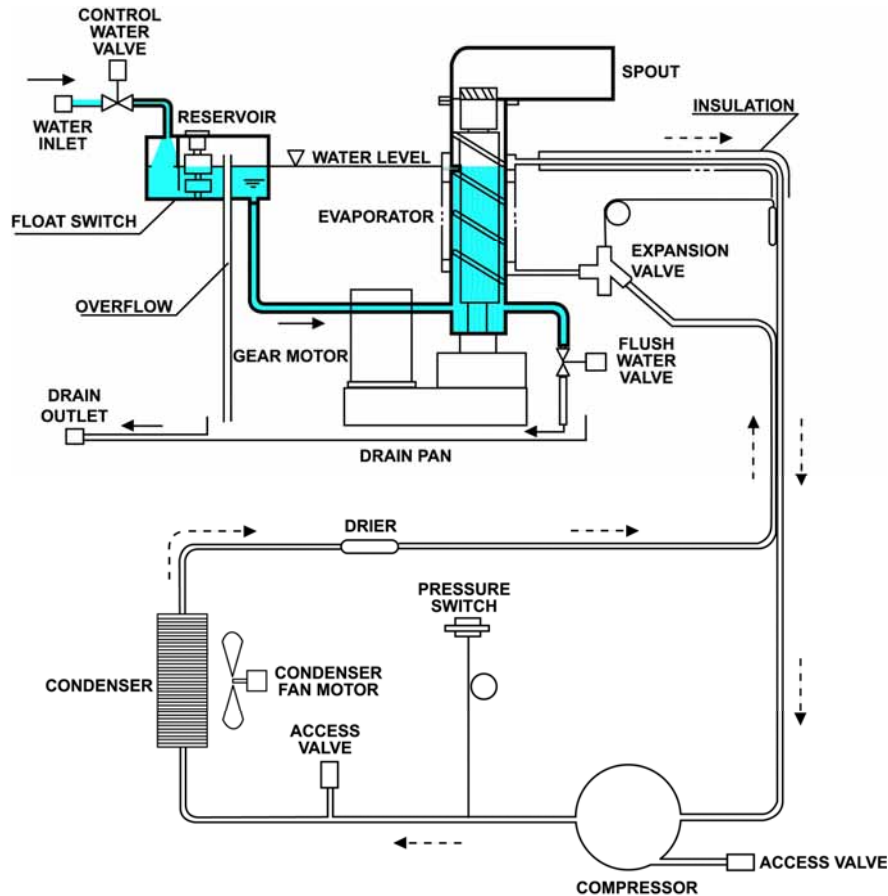
- Improves sanitation and reliability
- Reduces bearing auger and evaporator failures
- Reduces mineral build-up



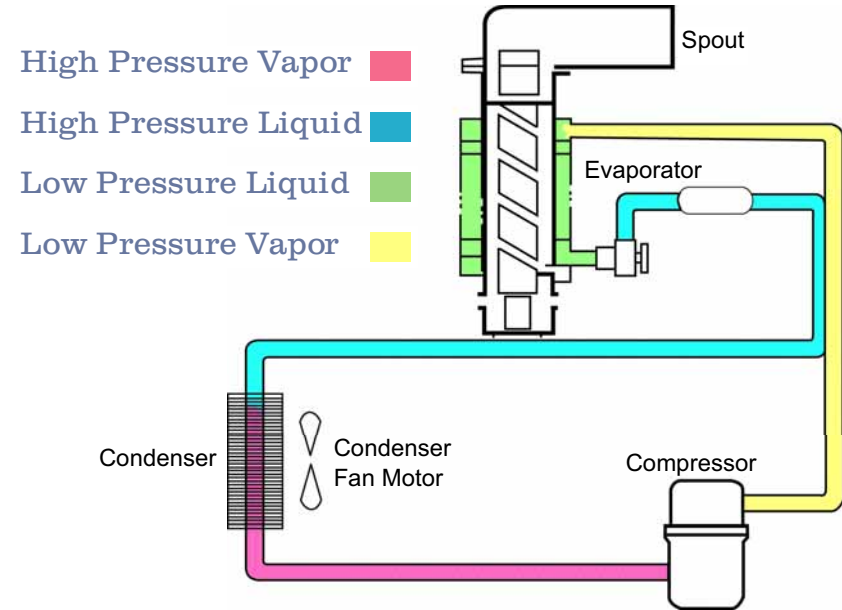
FLAKER SYSTEM

ICE MAKING AND ICE DISCHARGE SYSTEM

A flaker system consists of a water supply system, an ice making chamber with a refrigeration system and a power driven auger. The dependability of the system is directly associated with how the Flaker is protected in three areas: water supply, power drive and ice maker discharge.



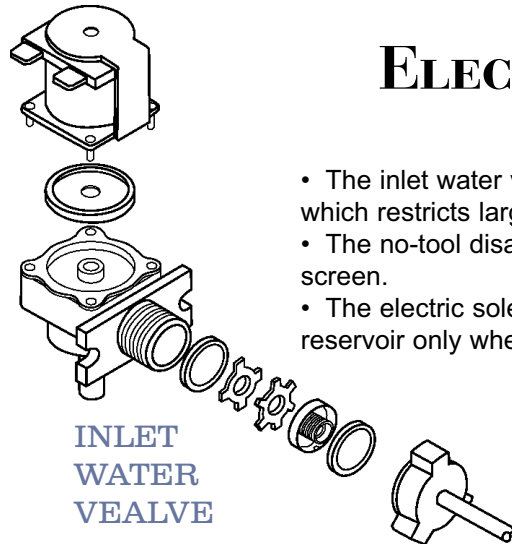
REFRIGERATION SYSTEM



FEATURES:

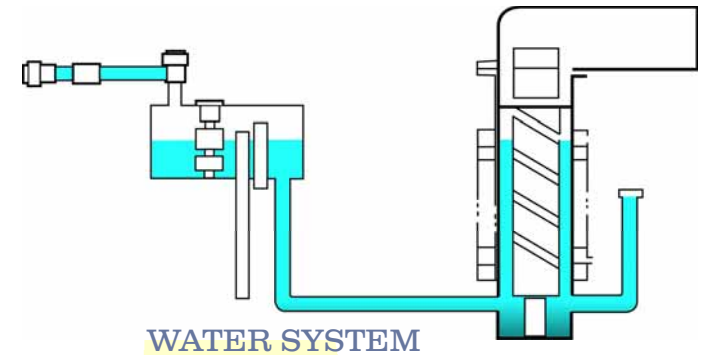
- Flaker Dependability is protected in 3 areas
 - A. Water Supply System**
Low water safety
 - B. Power Drive System**
Fuse and overload
 - C. Ice Maker Discharge System**
?????????

WATER SUPPLY SYSTEM



ELECTRIC WATER INLET VALVE

- The inlet water valve features an 80 mesh stainless screen, which restricts large particles from entering the machine.
- The no-tool disassembly allows easy visual inspection of screen.
- The electric solenoid cycles infrequently to supply water to the reservoir only when water is needed.



WATER SUPPLY

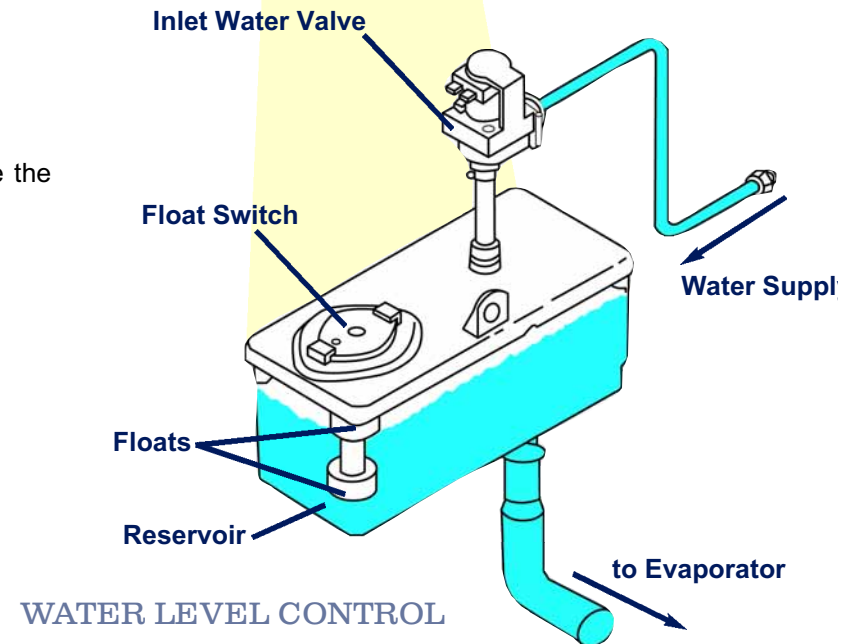
- Dual Magnetic Float Switch: Top Float controls water supply, while the bottom float protects machine with low water safety shut down.

FEATURE:

- Transparent reservoir
- Dual magnetic float switch
- CleanCycle 12™ Automatic system flush

BENEFIT:

- Visual water check assists machine diagnosis
- Top float controls water supply
- Bottom float protects machine with low water safety shut-down
- Drain and flush complete water system



POWER DRIVE SYSTEM

AUGER DRIVE MOTOR & GEAR HOUSING ASSEMBLY

- Internal thermal overload protects the motor and features an auto reset.
- External fuse protection against irregular electrical power supply. This protects the auger drive motor and gear housing assembly.

○ **FEATURE:**

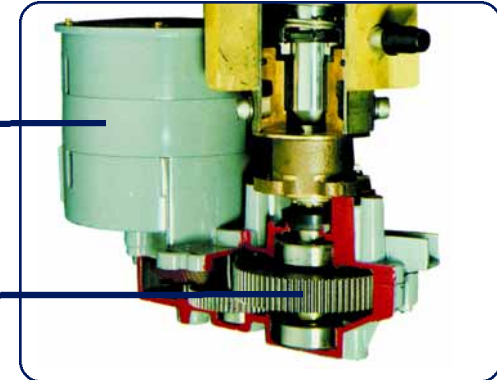
- 100% Sealed gear housing (non-vented)
- Thermal overload (Internal)
- Current fuse protection (External)

○ **BENEFIT:**

- Eliminates moisture collection in gear grease
- Motor protection (Auto reset)
- System protection (Manual reset)

Gear Motor

Gear Train



ICE MAKING CHAMBER

- Resin type bearings with graphite base are grease-less, so no grease gets into the ice. They are also longer lasting with higher dependability. The bearings are water-friendly, operating in either wet or dry environments.
- Direct Drive Auger allows higher torque, greater strength and dependability.
- Solid, anti-magnetic stainless steel auger resists impurities and pitting, featuring more durability and longer life.
- Heavy duty mechanical seal, resists water deterioration provides an excellent seal and protects the gear motor.

○ **FEATURE:**

- Resin type bearings (Graphite base)
- Direct drive auger
- Solid, anti-magnetic stainless steel auger
- Heavy duty mechanical seal

○ **BENEFIT:**

- No grease gets into ice, long life - dependable service
- Water friendly - operates in wet or dry environment
- Higher torque, greater strength - dependability
- Resists impurities and pitting - durability and long life
- Resists water deterioration - provides excellent seal and protects gear motor



ICE MAKER DISCHARGE SYSTEM

CONTROLS

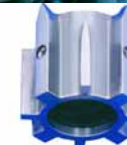
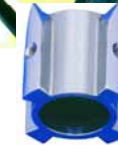
- The mechanical bin control provides positive machine shut-down when bin is full and initiates a sequential machine start-up.



- **FEATURE:**
 - Mechanical bin control
- **BENEFIT:**
 - Provides positive machine shut-down when bin is full, but allows quick machine restart
 - Safety - Secondary control shut-down if primary control fails
 - Shutdown protects machine, spout, and chute from damage due to ice build-up

EASY CONVERSION

- By changing the position of the cutter on the auger pin, cubelet ice can be formed instead of flaked ice. This function can be performed in the field.



FLAKER

CUBELET

FLAKED ICE

CUBELET ICE



WARRANTY

TWO YEAR Parts & Labor on entire unit.
FIVE YEAR Parts on: Compressor; Air-Cooled Condenser.

All these points add up to reasons for purchasing Hoshizaki Flakers....

- INTERNAL AUGER SYSTEM
- SOLID, ANTI-MAGNETIC STAINLESS STEEL AUGER
- STAINLESS STEEL EVAPORATOR
- THERMAL OVERLOAD MOTOR PROTECTOR
- CURRENT OVERLOAD SYSTEM PROTECTION
- WATER-FRIENDLY RESIN BEARINGS
- HIGH TORQUE DIRECT DRIVE AUGER
- HEAVY DUTY MECHANICAL SEAL
- TRANSPARENT RESERVOIR
- ELECTRIC WATER INLET VALVE
- DUAL MAGNETIC FLOAT SWITCH
- MECHANICAL BIN CONTROL*
- AIR FILTERS
- STAINLESS STEEL EXTERIOR

Hoshizaki America, Inc.
618 Hwy. 74 S., Peachtree City, GA 30269
1-800-438-6087 • Fax: 1-800- 345-1325 • Tel: 770-487-2331
www.hoshizaki.com



Item #40078
7/14/03